

# GERMICIDAL

---

## LOW PRESSURE MERCURY ARC LAMPS

USHIO Germicidal lamps are low pressure mercury arc lamps that emit radiation peaking at 253.7nm (UV-C).

Designed by experienced engineers, and by using quality material in combination with a tightly controlled manufacturing process, we provide high quality lamps free of impurities to maintain strong and stable output throughout the life of the lamp.

Our Germicidal lamps are manufactured at an ISO9001 certified facility. Emphasis on quality control and our large production capacity makes us an ideal OEM partner for providing consistent quality lamps with reliable delivery.

These lamps are components which may be used by customers to manufacture a variety of finished products.

## FEATURES & BENEFITS:

---

- Low Mercury Dose to Meet Environmental Demands
- Specially Formulated Coating Achieves High Output Over Long Life Hours
- High Purity Lamp Construction to Stabilize UV Output and Minimizes Depreciation (Averages 20-25% Depreciation at End of Life)
- Large Production Capacity Providing Lamps with Consistent Quality and Reliable Delivery
- Flexible Design Capability for Custom Lamp Development

## APPLICATIONS:

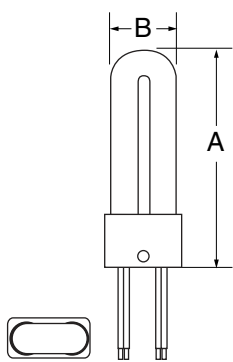
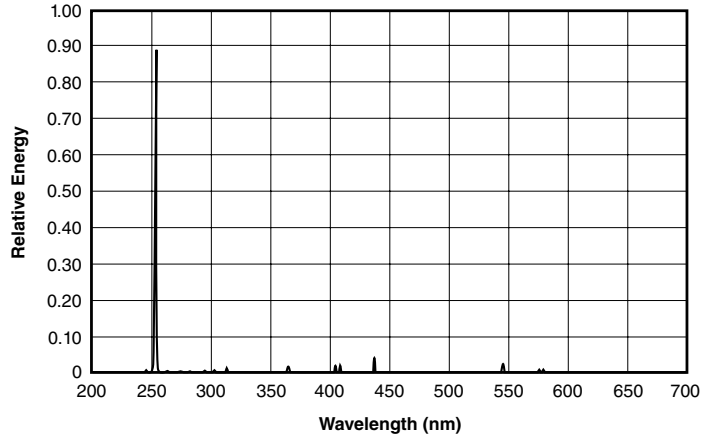
---

- Drinking Water
- Wastewater
- Air Conditioning System
- Pharmaceutical Processing
- Food Processing Facility
- Packaging Materials
- Laboratory/Research
- Photochemistry
- Clean Room
- Other Sterilization & Disinfection Needs

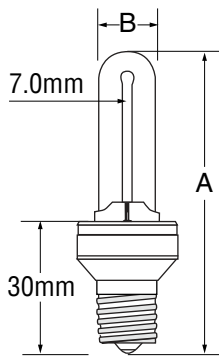
# USHIO



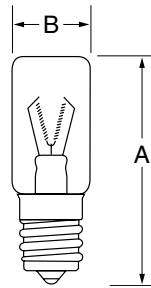
### SPECTRAL DISTRIBUTION GERMICIDAL LAMP 253.7nm



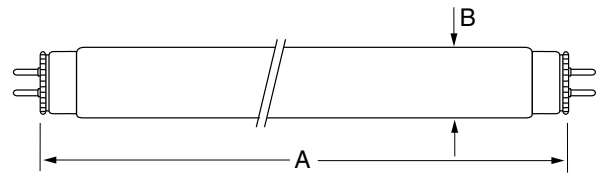
T7



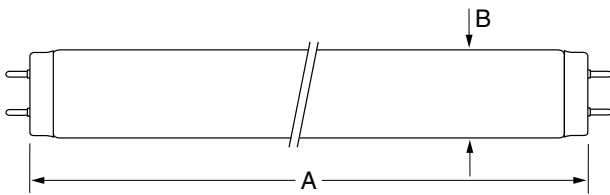
**E17 Base**  
GT3 Replacement  
w/Ballast



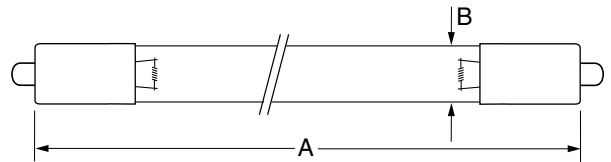
**E17 Base**  
Mini Bowl



**Miniature Bi-Pin G5 Base**  
T5

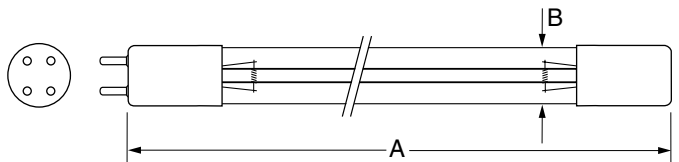
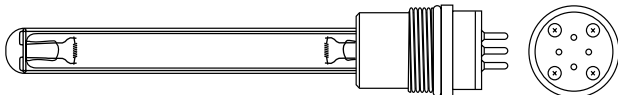


**Medium Bi-Pin G13 Base**  
T8 and T10



**Single-Pin Base**  
T5

**Double Tube Model is available by request**  
Contact USHIO's Germicidal product manager  
for more information.



**4-Pin Base**  
T5

## Low Pressure Mercury Arc Lamps

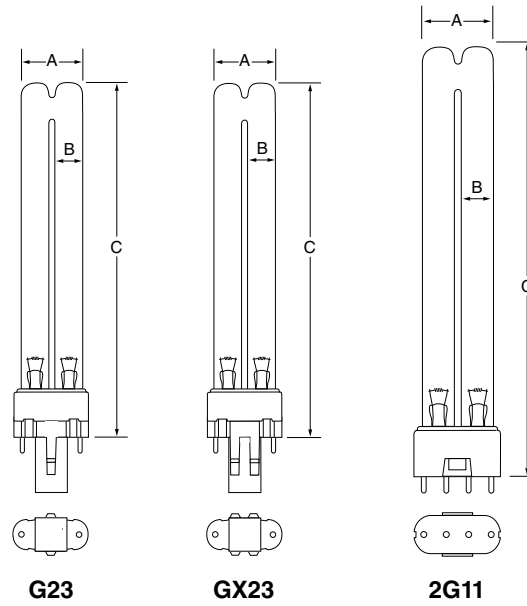
Watts (W)	Ordering Code	Lamp Description	Base	Volts (V)	Lamp Current (A)	Dimension		Spectral Peak (nm)	UV Output (W)	Avg Rated Life (h)		
						Length (A) (mm)	Diameter (B) (in)					
<b>T7</b>												
2.3	3000667	GUL3	—	28	0.085	61.5	2.42	19.0	0.75	253.7	0.54	3000
<b>GT3 Replacement with Ballast E17 Base</b>												
3.4	3000666	EGD3	E17	115	0.050	90.0	3.54	17.7	0.70	253.7	0.5	6000
<b>Mini Bowl Intermediate Screw E17 Base</b>												
3.0	3000022	GTL3	E17	10.5	0.300	63.0	2.48	20.0	0.79	253.7	0.16	3000
<b>T5 - Miniature Bi-Pin G5 Base</b>												
4.5	3000013	G4T5	G5	29.0	0.170	134.5	5.30	15.5	0.61	253.7	0.8	6000
6.0	3000015	G6T5	G5	42.0	0.160	210.5	8.29	15.5	0.61	253.7	1.8	8000
7.2	3000016	G8T5	G5	57.0	0.145	287.0	11.30	15.5	0.61	253.7	2.2	8000
11.0	3000310	G11T5	G5	37.0	0.330	210.5	8.29	15.5	0.61	253.7	2.2	8000
16.0	3000311	G16T5	G5	50.0	0.350	287.0	11.30	15.5	0.61	253.7	3.2	8000
<b>T8 - Medium Bi-Pin G13 Base</b>												
9.5	3000006	G10T8	G13	46.0	0.230	330.0	12.99	25.5	1.00	253.7	2.7	8000
15.0	3000007	G15T8	G13	55.0	0.305	436.0	17.17	25.5	1.00	253.7	4.9	8000
25.0	3000008	G25T8	G13	46.0	0.600	436.0	17.17	25.5	1.00	253.7	6.9	8000
30.5	3000009	G30T8	G13	99.0	0.355	893.0	35.15	25.5	1.00	253.7	13.9	8000
55.0	3000316	G55T8	G13	83.0	0.770	893.0	35.15	25.5	1.00	253.7	18.0	8000
<b>T10 - Medium Bi-Pin G13 Base</b>												
19.0	3000314	G20T10	G13	58.0	0.360	588.5	23.17	32.5	1.28	253.7	7.5	8000
39.5	3000315	G40T10	G13	106.0	0.420	1198.0	47.17	32.5	1.28	253.7	19.8	8000
<b>T5 - Single Pin Base</b>												
16.0	3000338	G10T5L	Single Pin	55.0	0.425	357.0	14.06	15.5	0.61	253.7	5.3	9000
39.0	3000312	G36T5L	Single Pin	115.0	0.425	846.0	33.31	15.5	0.61	253.7	13.0	9000
65.0	3000313	G64T5L	Single Pin	250.0	0.425	1553.6	61.17	15.5	0.61	253.7	27.0	9000
<b>T5 - Single Pin Base - Quartz</b>												
39.0	3000010	G36T5L	Single Pin	120.0	0.425	846.0	33.31	15.0	0.59	253.7	—	9000
65.0	3000014	G64T5L	Single Pin	220.0	0.425	1572.0	61.89	15.0	0.59	253.7	—	7500
<b>T5 - Single Pin Base - Ozone</b>												
16.0	3000005	G10T5VH	Single Pin	55.0	0.425	375.0	14.76	15.0	0.59	253.7	—	7500
39.0	3000011	G36T5VH	Single Pin	120.0	0.425	860.0	33.86	15.0	0.59	253.7	—	7500
65.0	3000242	G64T5VH	Single Pin	220.0	0.425	1554.0	61.18	15.0	0.59	253.7	25.0	9000
<b>T5 - 4-Pin Base</b>												
14.0	3000348	G36T5L/4P	4-Pin	40.0	0.425	287.0	11.30	15.5	0.61	253.7	3.0	8000
22.0	3000350	G36T5L/4P	4-Pin	62.0	0.425	436.0	17.16	15.5	0.61	253.7	7.0	8000
39.0	3000343	G36T5L/4P	4-Pin	115.0	0.425	846.0	33.31	15.5	0.61	253.7	13.0	9000
<b>T5 - 4-Pin Base - Quartz</b>												
16.0	3000425	G10T5L/4P	4-Pin	55.0	0.425	357.0	14.06	15.0	0.59	253.7	5.7	9000
65.0	3000423	G64T5L/4P	4-Pin	220.0	0.425	1554.0	61.18	15.0	0.59	253.7	25.0	9000
<b>T5 - 4-Pin Base - Ozone</b>												
16.0	3000354	G10T5VH/4P	4-Pin	55.0	0.425	357.0	14.06	15.0	0.59	253.7	5.7	9000

Average lamp life and output measurements taken under laboratory conditions in open air.  
Lamps are cycled for 2 hours 45 minutes on / 15 minutes off when testing life and output.  
Lamp data is for reference only. Actual lamp performance depends on system design and operating conditions.

**Warning:** Protect your eyes and skin when operating Germicidal lamps.  
Equipment should be designed to completely screen or filter UV-C radiation.

# GERMICIDAL

## Low Pressure Mercury Arc Lamps



Watts (W)	Ordering Code	Lamp Description	Base	Volts (V)	Lamp Current (A)	Dimensions				Spectral Peak (nm)	UV Output (W)	Average Rated Life (h)		
						Length (A)		Diameter (B)					Length (C)	
						(mm)	(in)	(mm)	(in)	(mm)	(in)			
<b>G23 &amp; GX23 Base</b>														
5.5	3000321	GPX5	G23	35	0.180	28.0	1.10	13.0	0.51	85.0	3.35	253.7	1.2	8000
7.0	3000328	GPX7	G23	45	0.180	28.0	1.10	13.0	0.51	115.0	4.53	253.7	1.9	8000
9.0	3000304	GPX9	G23	59	0.180	28.0	1.10	13.0	0.51	145.0	5.71	253.7	2.4	8000
11.8	3000322	GPX11	G23	91	0.155	28.0	1.10	13.0	0.51	215.0	8.46	253.7	3.0	8000
13.4	3000323	GPX13	GX23	59	0.285	28.0	1.10	13.0	0.51	170.0	6.69	253.7	3.6	8000
<b>2G11 Base</b>														
18.0	3000324	GPL18K	2G11	58	0.375	40.0	1.57	20.0	0.51	225.0	8.86	253.7	5.5	8000
36.0	3000339	GPL36K	2G11	106	0.435	40.0	1.57	20.0	0.51	415.0	16.33	253.7	12.0	8000

Average lamp life and output measurements taken under laboratory conditions in open air. Lamps are cycled for 2 hours 45 minutes on / 15 minutes off when testing life and output. Lamp data is for reference only. Actual lamp performance depends on system design and operating conditions.

**Warning:** Protect your eyes and skin when operating Germicidal lamps. Equipment should be designed to completely screen or filter UV-C radiation.